

NAVIGATING FROM GREENOCK TO GLASGOW

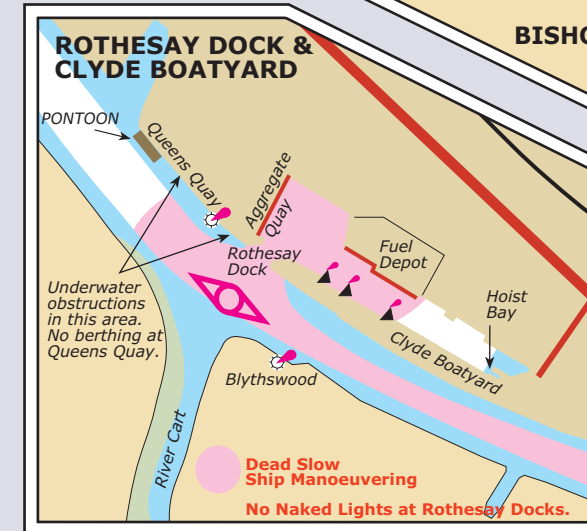
- Check the Clydeport Notices to Mariners. These are promulgated at clubs and marinas, and can be viewed and downloaded from www.clydeport.co.uk > operational > information.
- Reporting Points (VHF Ch 12) on the River Clyde are - see symbols on chart.
- Vessels planning an upriver passage should contact their destination or berth before proceeding.
- The speed limit upstream of Cloch Point is 12 knots, and 5 knots at locations marked by 'Dead Slow' notice boards. Due regard must be paid to the effect of your wash - see Clydeport Notices to Mariners.
- Vessels under sail between Greenock Ocean Terminal (Buoy No 1) and Bowling are not relieved of their obligation under Rules for Narrow Channels to give way to large vessels.
- Vessels under way E of Bowling must proceed under power only.
- The pontoon berth at Queens Quay, Clydebank can be used by visiting craft. Contact Clydebank Re-built: 0141 951 3420.
- Navigation of the River Cart should only be undertaken in daylight. Information from Renfrewshire Council: 0141 842 5743 (office hours).
- The pontoon berth at Braehead is not a public landing point and can only be used by prior arrangement with Clydebuilt: 0141 886 1013.
- Craft within or passing Rothesay Dock, where there is a fuel berth, must extinguish all naked lights.
- Seaplane operations take place between Princes Dock, the passenger embarkation point, and the take-off and landing area at Shieldhall Riverside Quay, near King George V dock. The aircraft may also land abeam Yorkhill Quay in the vicinity of the Tall Ship Glenlee. The aircraft commander will ensure that the area is clear of surface craft before landing or taking off, and will, when on the surface, be governed by the International Rules for the Prevention of Collision at Sea.
- If you are proceeding upstream of the bridges at Glasgow Science Centre you must know your air draught, and also determine the overhead bridge clearances for the tide level at the time of passage, by calculation in advance, and on arrival by checking the height of the tide at the tide board at Yorkhill Quay, which gives the height of the

tide above chart datum. Tide boards en route can also be consulted (see diagrams above). Subtract this reading from Finnieston Bridge height, which is 10.01m above chart datum at the best point of passage (at the daymark) to determine the clearance height. If visitors require Bells and The Science Centre bridges to be opened (see diagram for closed heights), they must call 0141 946 5186 at least 8 hours in advance of their arrival, or when booking a berth. N.B The bridges cannot be opened in wind speeds of more than 20 mph (17 knots).

- Berthing at Glasgow. Pontoon berths at the Crowne Plaza can be booked by calling the SECC on 0141 275 6270. The pontoon facility at Pacific Quay and the Broomielaw pontoon are operated by Glasgow City Council (GCC). Information on GCC facilities can be obtained by phoning 0141 287 9028 (0800 - 1700), or 0141 276 1585 (1700 - 0800). Information is also available on the website www.riverclydeusers.info
- All vessels should maintain a continuous listening watch on VHF Channels 16 and 12 (Clydeport Estuary Control), and observe the mandatory replotting points.

NAVIGATION UPSTREAM OF GLASGOW WEIR

- Sub-surface hazards exist upstream of Albert Bridge (W side).
- Vessels can only transit Glasgow Weir when high tide levels reach and exceed the impounded upstream level of 4.17m above chart datum. Predicted levels may not be achieved.
- Berthing upstream of the Weir is very limited.
- For safety reasons the Weir should if possible be traversed in daylight.
- The Weir access phone number is 0141 276 1585. Vessels can arrange passage through the Weir by phoning this number at any time. Advance notice is advisable.
- There are no guidance publications published, nor is there any information on the GCC website.
- The Council takes no responsibility if river water levels or conditions make passage through the Weir impossible. Users navigate at their own risk.



KEY
Note: Diagrams are for guidance only.

- Radio Reporting Point
- Ship berthing location
- Dead Slow and Ship Manoeuvring area
- Pontoon berth
- Metric Tide Board

TIDES

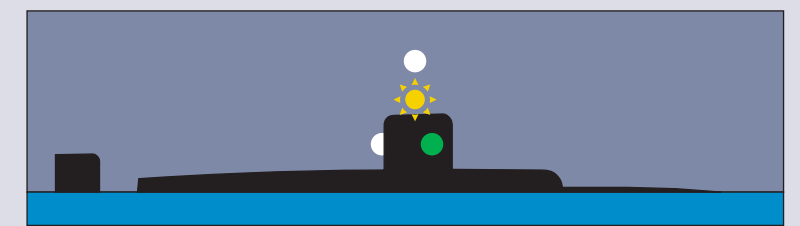
| TIDAL INFORMATION | GREENOCK | GLASGOW |
|-----------------------|----------|---------|
| Tidal Range (Springs) | 3.1m | 4.0m |
| Tidal Range (Neaps) | 1.8m | 2.2m |
| Time Difference | 00 mins | 32 mins |

THE ROYAL NAVY - WARSHIPS

A number of different types of warships and submarines use the Gareloch, Loch Long and the Firth of Clyde Channel. The ships vary from small mine hunters to large submarines and warships. Larger vessels will remain within the Narrow Channel, where Rule 9 applies. Warships should not be approached closer than 1,000 metres, as they may be on exercise and may make unexpected and large alterations in course or speed.

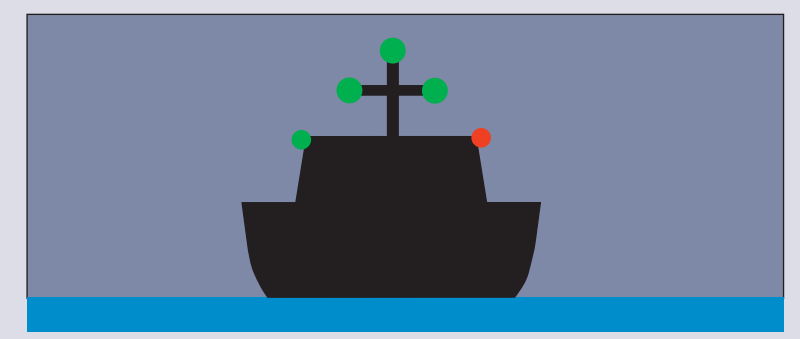
SUBMARINES
Submarines operate on the Clyde all year round. Whilst moving through the Clyde, they will be on the surface. Submarines are not especially manoeuvrable on the surface and will follow the channels. They may be escorted by security vessels, especially police launches and inflatables. Other vessels should observe Rule 9, giving these vessels a wide berth. Police vessels will intercept vessels which come too close, particularly if they are likely to embarrass the safe navigation of the vessel. Both the police vessels and the submarine will monitor VHF Channels 16 and 12 whilst in the Clydeport area. Because of the submarines' low freeboard, they are often difficult to see even in daytime, they also have a low radar signature so it is prudent to keep a good look out and to monitor VHF. Submarines travelling to or from Faslane will require the Gareloch to be closed to other traffic which is signalled using the Port Closure Flags at Faslane, Rhu Hard, Green Isle and Navy Buildings.

At night, the submarine will display an amber flashing light to assist with detection. It is important to bear in mind that the navigation lights are mostly housed on the fin, giving the submarine the appearance of being much smaller than it is. The diagram below shows the arrangement:



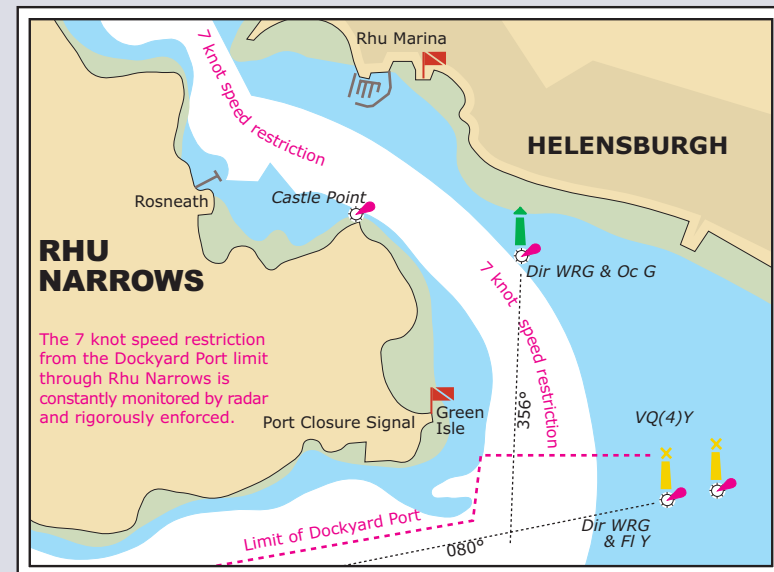
WARSHIPS
A large number of warships of all NATO nations and classes can be seen on the Clyde in the spring and autumn as well as occasionally throughout the year. These vessels will use the navigation channels to transit through the Clyde, observing the Rule of the Road as any other power driven vessel. The vessels will also monitor VHF channels 16 and 12. The vessels pose no hazard and can be easily seen. Larger vessels approaching Faslane will require the Gareloch to be closed to other traffic which is signalled using the Port Closure Flags at Faslane, Rhu Hard, Green Isle and Navy Buildings. Vessels should observe normal Rule of the Road and not approach warships for a 'closer look', in case this impedes the safe passage of the vessel.

MINE HUNTERS
A number of small warships used for Mine Hunting are also deployed from Faslane. These vessels may be found anywhere around the Clyde and may not stick to the navigational channels whilst engaged in mine hunting. Whilst engaged in mine hunting, these vessels will display three all round green lights or three balls. These vessels are restricted in their ability to manoeuvre whilst these lights and shapes are exhibited. It is dangerous for another vessel to approach within 1,000 metres.



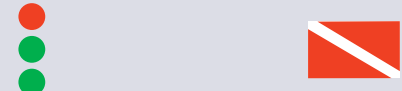
Leaflet design and yachting consultancy: Clyde Marine Marketing & Media. Photographs: Mike Balmforth, Loch Lomond Seaplanes and Clydeport.

THE ROYAL NAVY THE QUEEN'S HARBOUR REGULATIONS



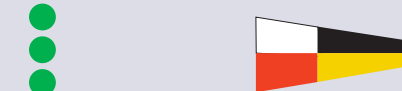
Craft entering the Gareloch or Loch Long at any time, or if in doubt, should contact the QHM Duty Controller on VHF Channel 73 or 01436 674321 (Extension 3555).
Queen's Harbour information is available at: www.rnopsscotland.com

RHU NARROWS
When Rhu Narrows are closed for the transit of large naval craft, the following signals are shown:



Location of signals:
Faslane; Rhu Hard; DG Range Building adjacent to Green Isle; Navy Buildings at Greenock; aboard tugs and patrol craft in the vicinity.

FASLANE & COULPORT RESTRICTED AREAS
No vessel is permitted in the areas shown on Admiralty Charts when the following signals are displayed at the area and on tugs or patrol craft in the vicinity.



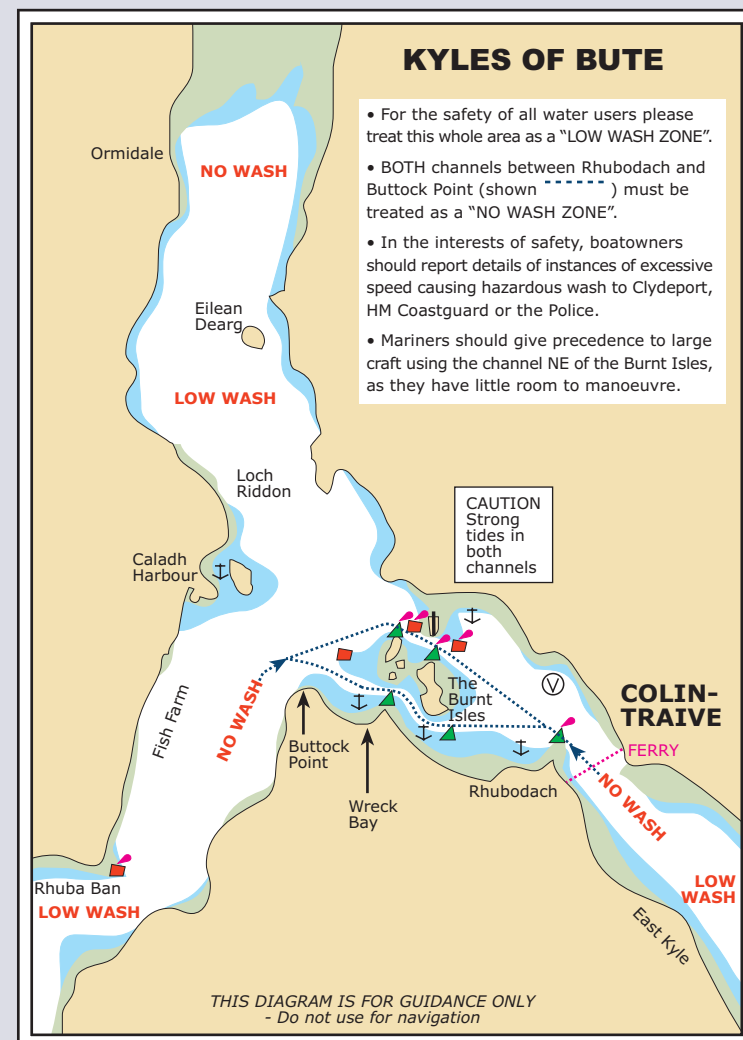
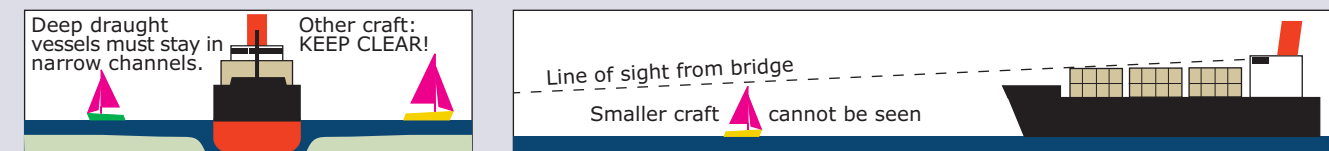
Coullport Restricted Area lies on the east side of Loch Long, but extends almost to the western shore. Craft in transit should keep to the western shore at all times. MOD Police launches are in attendance.

Note that there is a safety zone around all warships and their escorts at anchor or under way in the Firth of Clyde. These vessels should be given a wide berth of at least 1,000 metres.

OTHER AREAS
Full information is given on the relevant charts.

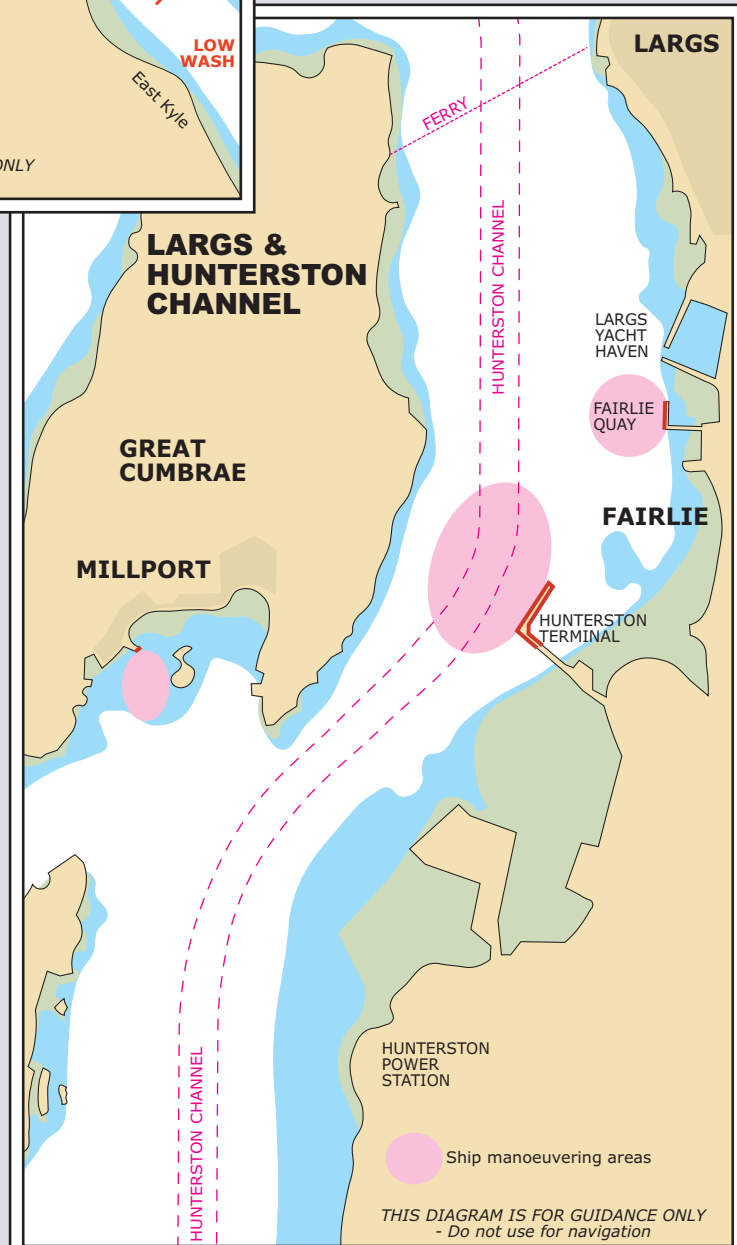
LOCH GOIL RANGE
The closure of Loch Goil, whilst trials are in progress, is signalled by the display of large red flags at Douglas Pier and Carrick Castle Pier. When these flags are flying, mariners wishing to operate within Loch Goil are requested to contact 01301 702011, or call Range Control on VHF Ch 69: "Golf Xray Alpha".

LOCH FYNE RANGE
The Loch Fyne Range is situated on the eastern side of the Loch between Strachur and St Catherine's Point. If the range is in use keep to the western shore.



GENERAL SAFETY

- Advice on any aspect of navigational safety in the Firth of Clyde can be obtained from Clydeport Operations (H24) on 01475 726221 or tower.estuary@clydeport.co.uk or www.clydeport.co.uk
- In case of an emergency immediately contact HM Coastguard on VHF Ch 16.
- Leisure diving: All craft should keep a lookout in order to avoid dive support craft, which fly Int. Code Flag 'A'.
- Information on submarine activity (Subfacts) is broadcast every 4 hours (starting 0510) by HM Coastguard, and issued on Navtex. Subfacts are also promulgated at www.mopsscotland.com
- A seaplane operates from Rhu Marina and from the River Clyde at Govan. It will keep clear of vessels in the vicinity. See over, and Clydeport Notices to Mariners.
- Major developments and constructions are under way throughout the river area. All mariners are to be vigilant and observe temporary restrictions that may be in force.
- Yacht club officials responsible for races should consult the protocol in the Clyde Yacht Clubs' Association website (www.cycyca-online.org.uk) This includes liaison with Clydeport Estuary Control, unlit yachts after sunset, seasonally laid racing marks, and encroachment into shipping channels.
- Clydeport Notices to Mariners are published on www.clydeport.co.uk. All Mariners should ensure they are familiar with these Notices.

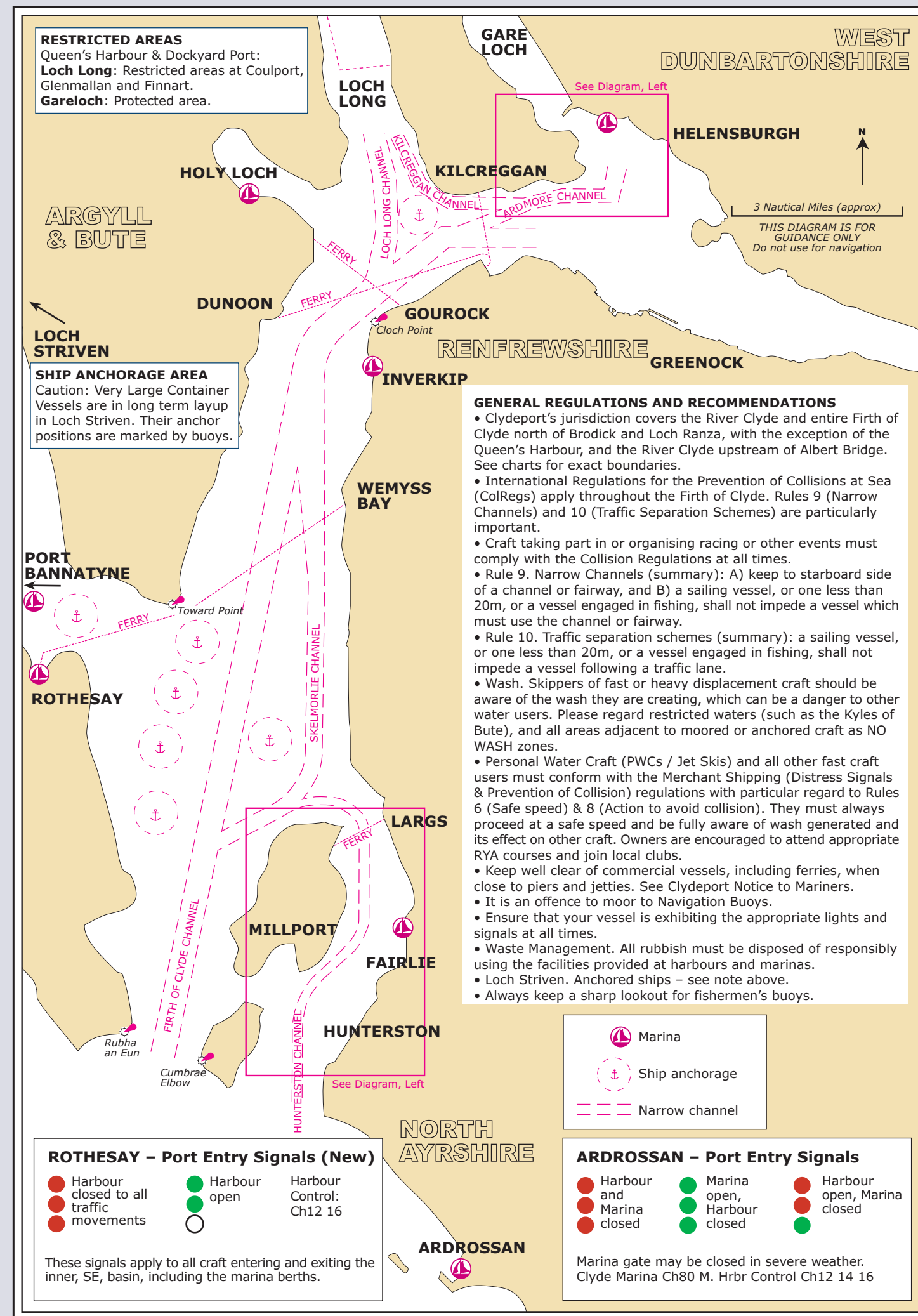


SAFETY: OTHER CRAFT

Vessels, particularly power craft under way in the Kyles of Bute and Loch Riddon, or when passing any location being used by moored or anchored craft, should observe the following:

- Your wash affects other vessels long after you have passed the location, so you may be unaware of the problems you are causing. Wash can cause damage, injury, or worse.
- Keep a lookout for moored craft with a dinghy astern (indicating people on board), craft anchored or rafted together, children in sailing or rubber dinghies, people swimming or launching a boat from the shore, or ferrying people or stores from the shore.
- Slow to your **NO WASH SPEED** in these circumstances.

CAUTION: THE DIAGRAMS IN THIS LEAFLET ARE FOR GUIDANCE ONLY, MAY NOT BE ACCURATE IN DISTANCE OR DIRECTION, AND SHOULD NOT BE USED FOR NAVIGATION.



RESTRICTED AREAS
Queen's Harbour & Dockyard Port:
Loch Long: Restricted areas at Coullport, Glenmallan and Finnart.
Gareloch: Protected area.

SHIP ANCHORAGE AREA
Caution: Very Large Container Vessels are in long term layup in Loch Striven. Their anchor positions are marked by buoys.

GENERAL REGULATIONS AND RECOMMENDATIONS

- Clydeport's jurisdiction covers the River Clyde and entire Firth of Clyde north of Brodick and Loch Ranza, with the exception of the Queen's Harbour, and the River Clyde upstream of Albert Bridge. See charts for exact boundaries.
- International Regulations for the Prevention of Collisions at Sea (ColRegs) apply throughout the Firth of Clyde. Rules 9 (Narrow Channels) and 10 (Traffic Separation Schemes) are particularly important.
- Craft taking part in or organising racing or other events must comply with the Collision Regulations at all times.
- Rule 9. Narrow Channels (summary): A) keep to starboard side of a channel or fairway, and B) a sailing vessel, or one less than 20m, or a vessel engaged in fishing, shall not impede a vessel which must use the channel or fairway.
- Rule 10. Traffic separation schemes (summary): a sailing vessel, or one less than 20m, or a vessel engaged in fishing, shall not impede a vessel following a traffic lane.
- Wash. Skippers of fast or heavy displacement craft should be aware of the wash they are creating, which can be a danger to other water users. Please regard restricted waters (such as the Kyles of Bute), and all areas adjacent to moored or anchored craft as NO WASH zones.
- Personal Water Craft (PWCs / Jet Skis) and all other fast craft users must conform with the Merchant Shipping (Distress Signals & Prevention of Collision) regulations with particular regard to Rules 6 (Safe speed) & 8 (Action to avoid collision). They must always proceed at a safe speed and be fully aware of wash generated and its effect on other craft. Owners are encouraged to attend appropriate RYA courses and join local clubs.
- Keep well clear of commercial vessels, including ferries, when close to piers and jetties. See Clydeport Notice to Mariners.
- It is an offence to moor to Navigation Buoys.
- Ensure that your vessel is exhibiting the appropriate lights and signals at all times.
- Waste Management. All rubbish must be disposed of responsibly using the facilities provided at harbours and marinas.
- Loch Striven. Anchored ships – see note above.
- Always keep a sharp lookout for fishermen's buoys.

ROTHESAY – Port Entry Signals (New)

- Harbour closed to all traffic movements
- Harbour open
- Harbour Control: Ch12 16

These signals apply to all craft entering and exiting the inner, SE, basin, including the marina berths.

ARDROSSAN – Port Entry Signals

- Harbour and Marina closed
- Marina open
- Harbour closed
- Harbour open, Marina closed

Marina gate may be closed in severe weather.
Clyde Marina Ch80 M. Hrbr Control Ch12 14 16

THIRD EDITION



CLYDE LEISURE NAVIGATION GUIDE



| CONTACTS | | MARINA CONTACTS | |
|-------------------------------------|-------------|-----------------------------------|---------------------------------------|
| EMERGENCIES | VHF Channel | Telephone | |
| Clydeport Estuary Control | 16 | 999 / 112 | |
| HM Coastguard (Greenock MRCC) | 12 | 01475 726221 | Ardrossan – Clyde Marina 01294 607077 |
| Queen's Harbour Master (RN Faslane) | 16 / 67 | 01475 729988 | Fairlie Quay 01475 568287 |
| British Waterways (Bowling Basin) | 73 | 01436 674321 ext 3555 | Largs Yacht Haven 01475 675333 |
| Glasgow Harbour Berthing | 16 / 74 | 01389 877969 (See Clydeport NtoM) | Kip Marina 01475 521485 |
| Clyde Boatyard (Rothsay Dock) | - | 0141 287 9225 (9328 after hours) | Bowling Marina 01389 877969 |
| | | 0141 941 3366 | Rhu Marina 01436 820238 |
| | | | Holy Loch Marina 01369 701800 |
| | | | Rothsay Marina 01700 500630 |